



# Friends of the Wade

The Marion E. Wade Center

Wheaton College

## Pauline Baynes Art Exhibit

Pauline Baynes is the creator of some of the most recognizable and beloved drawings in children's literature: those that illuminate C.S. Lewis's Chronicles of Narnia. The Wade Center is privileged to own some of her original drawings for the Chronicles, as well as the beautiful Narnia map she created in 1968. Though the Narnia illustrations are perhaps the best known of her work, Ms. Baynes is an award-winning illustrator with countless books to her credit.

Ms. Baynes studied at the famed Slade School of Fine Art in London, evacuating with the school to Oxford due to World War II. During the war, Baynes worked for the defense department drawing hydrographic charts. Her professional illustration career began when she drew a picture on the margin of a letter to a friend, who showed it to an editor, leading to three book illustration commissions. In 1948, she illustrated J.R.R. Tolkien's *Farmer Giles of Ham*. It is likely that Tolkien's high opinion of Baynes' work led C.S. Lewis to ask her to illustrate *The Lion, the Witch and the Wardrobe*.

The other six Chronicles followed, and C.S. Lewis thoroughly appreciated the drawings Pauline Baynes contributed. Walter Hooper states that theirs was "the perfect marriage of author and illustrator." *The Last Battle* won the Carnegie Medal for best children's book in 1956, and when Baynes wrote to congratulate Lewis on his medal, he wrote back, "Is it not rather 'our' Medal?"

The Narnian Chronicles finished, Ms. Baynes again began collaboration with Tolkien, now on *The Adventures of Tom Bombadil* and *Smith of Wootton Major*. Throughout this time she was producing numerous other commissions, and her own books as well. In 1968, she won the Kate Greenaway Medal for her illustrations for *The Dictionary of Chivalry*. She has, over the years, illustrated more than one hundred books.



Pauline Baynes  
in a photo taken by  
Dr. Clyde Kilby in 1978.

In tribute to Pauline Baynes' accomplished career and her significant contribution to the impact of the Narnian stories, the Wade Center will mount an exhibition in January 2008 featuring pieces from both the Wade's collection as well as Ms. Baynes' private collection. Highlights will include recent illustrations for *The Elephant's Ball*, an 18th century children's poem recently reprinted by Eerdmans, and unpublished paintings for a children's fantasy tale.

To commemorate the exhibition, the Wade Center is honored to be able to add to Ms. Baynes' extensive credits a limited edition book entitled *How Excellent is Thy Name*, featuring her illustrations of Psalm 8. This elegant picturebook will have a hard cover and full color illuminations of the psalm, and will be available for sale exclusively through the Wade Center. As a Friend of the Wade, you are invited to reserve a copy before the exhibit opens by phoning us at 630-752-5908. **W**

"God gives His gifts where He finds the vessel empty enough to receive them."

—C.S. Lewis



EDITING & DESIGN: Rachel Mink

The Marion E. Wade Center  
Wheaton College  
Wheaton, Illinois 60187

Phone: 630-752-5908

Fax: 630-752-5459

E-mail: wade@wheaton.edu

www.wheaton.edu/wadecenter

For the past five years I have had the pleasure of helping to plan the Annual C.S. Lewis Festival of Petoskey, MI, and participate in the kickoff weekend. The Festival began in the fall of 2003. The initial idea was simply a Friday night showing of the documentary *The Magic Never Ends* followed by a Q&A time with me and David Crouse and Chip Duncan, the film's producers. This modest agenda quickly grew to a full month of activities supported by local individuals and businesses. In the past five years the Festival has grown from an initial budget of \$7000 underwritten by seven local sponsors to a budget of over \$18,000 and seventeen sponsors.

This year's opening speaker was Dr. Jerry Root (Lewis scholar and Wade Steering Committee member). On Saturday he and I led a seminar together at North Michigan Central College on C.S. Lewis and the problem of pain. Plans for next year's Festival, "C.S. Lewis and the Cosmos: Faith and Science," are already coming along nicely, so mark your November 2008 calendars and consider participating in the wide variety of events.

You may also wish to set aside April 23-26, 2008 to attend Imagination & the Gospel, a conference co-sponsored by the Wade Center and the Billy Graham Center that will consider the role of imaginative communication in Christian evangelism. More information will be sent to you in the weeks ahead. Thank you for your ongoing participation in the work of the Wade Center.

WITH ALL GOOD WISHES,



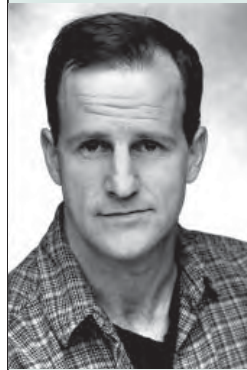
## Did You Know?

The Wade Center's garden was designed five years ago by Friends of the Wade, Rolland Hein and Kathy Balc. The garden requires maintenance through much of the year, so we are very grateful for Kathy's continued involvement in its care, especially in planting the entry-way urns. Thanks also go to our hired gardeners, Barb Galli and Stephanie Coates, who put in many morning and evening hours this past summer to refresh and restore large portions of the garden. Another thank-you goes to Wheaton College's Physical Plant, as they continue to care for the lawn and other areas of the garden year-round. **W**



## The Great Divorce On Stage

*The Great Divorce* is one of C.S. Lewis's best-loved books about the life of the soul. This metaphoric fantasy was published in 1946 and continues to fascinate readers with its Dante-esque depiction of a man who finds himself conducted through hell and heaven



while observing the characters who populate each realm. Like the *Divine Comedy*, the book addresses, in Dorothy L. Sayers's words, "the drama of the soul's choice."

The Wade Center is pleased to bring Anthony Lawton's performance of *The Great Divorce* back to Wheaton College on January 25 and 26, 2008, nearly ten years after

it debuted here in 1998. Lawton, a Philadelphia actor and playwright, adapted Lewis's story for the stage and performs this one-man play himself.

Reviewers of *The Great Divorce* have written that "Lawton holds us rapt...with his masterful performance" and that he "quickly makes us forget that he is only one man" as he portrays the various inhabitants of heaven and hell. Toby Zinman, critic for the *Philadelphia Inquirer*, states that Lawton's "decision to adapt *The*

*Great Divorce* to the stage [is] an appropriate and meaningful choice rather than an arbitrary indulgence. Performance literalizes the figurative; it shows us how a man can change."

The two performances of *The Great Divorce* will take place at Coray Auditorium on Wheaton College campus, Friday, January 25, at 7:00 p.m., and Saturday, January 26 at 3:30 p.m.. Following the matinee, Mr. Lawton will conduct a talk-back for interested audience members. Please reserve the dates on your calendar. You will receive another mailing in early January with further details on tickets and on the Friends of the Wade reception preceding the Saturday performance. **W**

## Up Close

### Michael Ward



It is our pleasure to introduce to Friends of the Wade the Rev. Dr. Michael Ward of Cambridge, England, who recently joined the Wade Center's Steering Committee.

A noted C.S. Lewis scholar, Michael brings a British perspective to our Board, along with a genuine understanding of the Wade Center's mission and goals.

Born in Sussex, England in 1968, Michael studied English at Oxford University and Theology at Cambridge University, and received his doctorate from the University of St. Andrews, Scotland. From 1996-1999, he was the resident Warden and Curator of The Kilns, C.S. Lewis's Oxford home. In 2004, he was ordained in the Anglican Church, and has since served as the chaplain of Peterhouse, the oldest of the Cambridge colleges.

Michael is co-editor of *Heresies and How to Avoid Them: Why it Matters What Christians Believe* (Hendrickson, 2007) and of the forthcoming *Cambridge Companion to C.S. Lewis*. His newest book, *Planet Narnia: The Seven Heavens in the Imagination of C.S. Lewis* (Oxford University Press, 2008), is considered a breakthrough in the study of Narnia. It argues that Lewis secretly built the Chronicles on the imagery associated with the seven planets of the pre-Copernican cosmos. In January 2008, Michael begins a U.S. book tour for *Planet Narnia*. If

you are interested in having him speak at your church or reading group, the Wade Center can provide you with the necessary details to make those arrangements.

Over the years, Michael has spoken extensively on C.S. Lewis in Britain and internationally. In 2002, he debated Christian fiction with the atheist writer, Philip Pullman in Oxford. In the United States he has spoken at (among many other places) the University of Notre Dame, IN; the Episcopal Chaplaincy at Harvard

University; and of course, Wheaton College, IL. Michael's on-screen credits include providing commentary for the documentary *The Life of C.S. Lewis* (available in the Wade's gift store) as well as for the Lewis documentary included in the DVD release of *The Lion, the Witch and the Wardrobe*.

The Wade Center's Steering Committee is made up of people who are particularly invested in maintaining and developing our archives, programming, and facility. We are glad to welcome Michael Ward as a member of this advisory team. **W**

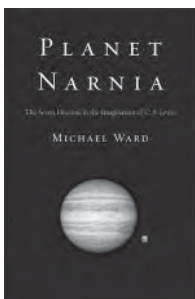
## Spotlight on *SEVEN*

### Volume 23

The Wade Center is pleased to announce the release of Volume 24 of *VII: An Anglo-American Literary Review*. This 128-page journal is published by the Wade Center annually to provide a venue for academic discussion of the seven Wade authors.

One article in particular makes use of the Wade Center's resources. In the mid-1950s, Sayers worked with illustrators to compose several holiday-centered cards illustrating various biblical themes, such as the life of Christ and the story of Noah's Ark, evidencing her gifts in writing as well as lay theology. Laura Simmons uses these holiday cards and unpublished letters of Dorothy L. Sayers to illuminate Sayers's collaborative artistic process. Next time you visit the Wade, you may like to stop in the reading room to enjoy these cards firsthand.

Other contributors include David Robb on George MacDonald's realistic novels, Norbert Feinendegen on the "Great War" of Owen Barfield and C.S. Lewis, and Paul Tankard on the Chronicles of Narnia. Closing the volume is Crystal Downing's assessment of Dorothy L. Sayers's essays "Are Women Human?" and "The Human-Not-Quite-Human," as well as reviews and booknotes on thirty-five recent publications related to the Wade authors. To order this volume of *SEVEN* or back issues, contact us directly or download an order form from our website. **W**



**The Marion E. Wade Center**  
Wheaton College  
Wheaton, Illinois 60187

## C.S. Lewis Portrait in Bronze

Lawrence Reid Bechtel, sculptor of the bust of C.S. Lewis on display in the Wade Center's museum, has graciously offered to cast a limited edition series of twelve additional versions of this sculpture, taken from the same mold as the Wade Center's original, and make them available to the Center's friends and associates.

The sculpture was created over the course of eleven months, during which Mr. Bechtel was immersed in researching biographies and photos of C.S. Lewis. Personal associations with the Wade Center's beginnings also informed Mr. Bechtel's creative process. The work was made to honor his father, Wheaton College professor Dr. Paul M. Bechtel. Mr. Bechtel's memories of living next door to Clyde and Martha Kilby and of doing Charles Williams letter transcriptions as a college student gave particular poignancy to his presentation of the sculpture to the Wade Center.

The first edition of this limited series was purchased by the Memphis C.S. Lewis Society. Now available is Edition #2 of the bust for \$7000. Ten percent of the proceeds from the sale of each edition will be donated to the Marion E. Wade Center. To learn more about this opportunity, please email Rachel Mink at [wade@wheaton.edu](mailto:wade@wheaton.edu). **W**

